



# Wallowa County Weed Watch

## Leafy Spurge

***A native of Eurasia, this aggressive weed now infests nearly 3 million acres in North America. If you have Spurge, you need help!!***

### The Problem

Leafy Spurge has a huge, complex root system and grows well in a wide range of moisture and soil conditions. It out competes almost any kind of desirable vegetation to form dense, solid stands.

Spurge seeds explode from dry seedpods and scatter up to 15 feet! Seeds have a high germination rate and can remain viable in the soil for eight years! The seeds also float, which makes Spurge very dangerous near water.

Leafy Spurge sap can cause extreme skin irritation and possibly blindness if it gets in your eyes. It is toxic to cattle, causing lesions around the eyes and mouth if ingested.

Currently, Leafy Spurge can be found in patches throughout the Grande Ronde River corridor, from Parsnip Creek to the Wallowa River, and just north of Joseph. It is a top priority weed in Wallowa County and Oregon and requires aggressive treatment measures.

### Identification

Leafy Spurge is a 2-3 feet tall perennial with clustered, upright stems and a deep taproot. The entire plant contains a toxic, white, milky sap. Leaves are narrow, 1-4" long and alternate. Showy yellow heart-shaped bracts, that look like flower petals, surround the tiny yellow-green flowers. Bracts turn green after flowering.

### Treatment

Leafy Spurge is one of the hardest weeds to kill. Chemical control of Leafy Spurge can be accomplished by repeated treatments at the proper time. Tordon with 2,4-D or Plateau are the most common treatments. Contact your local weed person for rates and timing – with Leafy Spurge it is important to do everything right. After treatment it is essential to plant or maintain vigorous perennial vegetation.

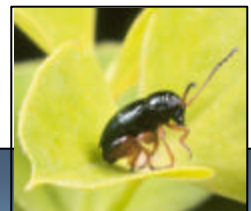
Two insects are being used in Wallowa County to help control Spurge: a stem and root borer (*Oberea erythrocephala*) and a root mining flea beetle (*Apthona lacertosa*). Long-term prescription grazing with sheep or goats can also help provide effective control.



In Full Bloom



River Bar Infestation



Biocontrol Bad Boys:  
*Apthona lacertosa*  
&  
*Oberea erythrocephala*

**Read and follow all label instructions when applying herbicides.** Trade names have been used to simplify instructions and no endorsement or warranty is expressed or implied by the Wallowa County Weed Board or this brochure.

### For more information or to report weed sites call:

Allen Schnetzky, Wallowa County Weed Control (541) 426-3332  
Leigh Dawson, Wallowa Whitman National Forest (541) 426-5535

Mark Porter, Wallowa Resources (541) 426-8053  
Nelle Murray, Asotin County (509) 243-2098